



## エゾサンセウウオに寄生する鉤頭虫の1種に就て

メタデータ	言語: English 出版者: 公開日: 2012-11-07 キーワード (Ja): キーワード (En): 作成者: 小林, 弘 メールアドレス: 所属:
URL	<a href="https://doi.org/10.32150/00000247">https://doi.org/10.32150/00000247</a>

## On a Species of Acanthocephala Parasitic on Salamander, *Hynobius retardatus* Dunn

(With 1 Text-figure)

Hiromu KOBAYASI

Biological Laboratory, Asahigawa College,

Hokkaido Gakugei University

(Received January 31, 1954)

小林 弘： エゾサンセウウオに寄生する鉤頭虫の1種に就て

So far as the author is aware, there has been no records on the occurrence of Acanthocephala in the salamander, *Hynobius retardatus* Dunn. The author found eight specimens of Acanthocephala in the digestive tracts of *Hynobius retardatus* which were collected by the author and by Prof. T. Imamura in Maruyama Park in the suburbs of Sapporo City. The descriptions of male and female were given as follows.

*Acanthocephalus lucidus* Van Cleave, 1925

Syn. *Acanthocephalus artatus* Van Cleave, 1925

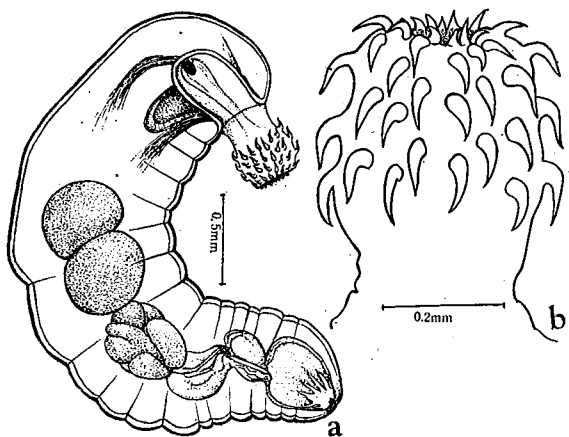
*Male.* Body of mature individual 4—5mm long and 0.7mm wide in middle portion. Proboscis 0.38mm long, 0.35mm wide and with crooked hooks in 13—14 longitudinal rows. Hooks in each row counted four in number, measuring  $90\mu$  long in the longest and  $60\mu$  long in the shortest as shown in the text-figure. Proboscis sheath 0.5mm long and 0.38mm wide. Proboscis connected with body by a short neck. Lemniscus longer than proboscis sheath. Testis, oval in shape and  $0.4 \times 0.35$ mm in diameters, lies tandem in the middle of body. Several cement glands closely massed in a elliptical shape behind the posterior testis. Säfttigen's pouch, 0.3mm long and 0.25mm wide in middle portion, lies behind cement glands.

*Female.* Almost equal in body shape and organs as those of male except body size and genital organ. The measurements of body and organs are as follows. Body 8—15mm long and 0.8—1mm wide in about middle. Proboscis 0.45mm long and 0.38mm wide. Proboscis hooks measuring  $98\mu$  long in the longest and  $75\mu$  long in the shortest. Proboscis sheath 0.6mm long and 0.43mm wide. The body cavity of mature female is filled with eggs which are measured 50—70 $\mu$  long and 20—25 $\mu$  wide.

*Locality.* The specimens were found in the small intestine and rectum of *Hynobius retardatus* in every specimen collected in pools in Maruyama Park in the suburbs of Sapporo City in the following seasons: two males and three females in April 1948 by T. Imamura; one male and two females in April 1951 by the author. It is noticeable

*Acanthocephalus lucidus* Van Cleave

- a. Male body.
- b. Proboscis of male.



that the parasite is not found in the digestive tract of *Hynobius retardatus* collected by the author during April and May in 1951 and 1952 from Shunko-dai in the suburbs of Asahigawa City and Kamui-kotan in Kamikawa-gun.

*Remarks.* The present specimens are wholly coincided in forms with *A. lucidus* which was described from Honshu. This is the first record of the present species in *Hynobius retardatus* and from Hokkaido.

Literature

- Harada, I. 1935. Zur Acanthocephalenfauna von Japan. Mem. Fac. Sci. a. Agric., Taihoku Imp. Univ. vol. 14, pp. 7-23.
- Yamaguti, S. 1939. Studies on the Helminth Fauna of Japan, Part 29. Acanthocephala II. Jap. J. Zool. vol. 8, pp. 317-351.